

RESEARCH

Open Access

# Osteoarthritis accelerates and exacerbates Alzheimer's disease pathology in mice

Stephanos Kyrkanides<sup>1\*</sup>, Ross H Tallents<sup>4</sup>, Jen-nie H Miller<sup>4</sup>, Mallory E Olschowka<sup>4,5</sup>, Renee Johnson<sup>5</sup>, Meixiang Yang<sup>1</sup>, John A Olschowka<sup>5</sup>, Sabine M Brouxhon<sup>2,3</sup> and M Kerry O'Banion<sup>5</sup>

## Abstract

**Background:** The purpose of this study was to investigate whether localized peripheral inflammation, such as osteoarthritis, contributes to neuroinflammation and neurodegenerative disease *in vivo*.

**Methods:** We employed the inducible Col1-IL1 $\beta$ <sup>XAT</sup> mouse model of osteoarthritis, in which induction of osteoarthritis in the knees and temporomandibular joints resulted in astrocyte and microglial activation in the brain, accompanied by upregulation of inflammation-related gene expression. The biological significance of the link between peripheral and brain inflammation was explored in the APP/PS1 mouse model of Alzheimer's disease (AD) whereby osteoarthritis resulted in neuroinflammation as well as exacerbation and acceleration of AD pathology.

**Results:** Induction of osteoarthritis exacerbated and accelerated the development of neuroinflammation, as assessed by glial cell activation and quantification of inflammation-related mRNAs, as well as A $\beta$  pathology, assessed by the number and size of amyloid plaques, in the APP/PS1; Col1-IL1 $\beta$ <sup>XAT</sup> compound transgenic mouse.

**Conclusion:** This work supports a model by which peripheral inflammation triggers the development of neuroinflammation and subsequently the induction of AD pathology. Better understanding of the link between peripheral localized inflammation, whether in the form of osteoarthritis, atherosclerosis or other conditions, and brain inflammation, may prove critical to our understanding of the pathophysiology of disorders such as Alzheimer's, Parkinson's and other neurodegenerative diseases.

## Background

Systemic (peripheral) inflammation may be associated with increased risk for Alzheimer's Disease (AD) pathology. In particular, a number of investigators have reported associations between serum levels of pro-inflammatory cytokines and other markers, including interleukin (IL)-1 $\beta$ , IL-6, tumor necrosis factor (TNF) $\alpha$ , C-reactive protein and  $\alpha$ 1-antichymotrypsin, with increased risk for dementia and AD [1-6]. Increased risk for AD was also observed in people homozygous for allele 2 of IL-1 $\beta$  (+3953), a variant previously associated with increased IL-1 $\beta$  secretion *in vitro* [7,8].

In animal models of neurodegeneration, experimentally-induced acute systemic inflammation led to the release of proinflammatory factors in the central nervous system that exacerbated neurodegeneration [9,10].

In another study, repeated intraperitoneal lipopolysaccharide (LPS) injection in wild type male mice resulted in accumulation of A $\beta$ 1-42 in the hippocampus and cerebral cortex [11]. In contrast, LPS administration to AD mouse models has given mixed results, with some investigators reporting exacerbation [12-14] and others improvement of pathology due to an inflammation-induced phagocytic activity [15-17]. To this end, overexpression of inflammatory cytokines in the brain of AD mouse models also resulted in alleviation of AD pathology [18], including our own where sustained expression of interleukin-1 $\beta$  (IL-1 $\beta$ ) in mouse hippocampus promoted plaque clearance in the APP/PS1 double transgenic mouse model [19].

But how is peripheral inflammation linked to AD pathology? Osteoarthritis (OA) in particular manifests as a slowly progressing debilitating disease that affects one or more joints of the body. Clinical symptoms include pain, swelling, joint enlargement and decreased range of joint motion. Substantial evidence confirms the role of

\* Correspondence: Kyrkanides@gmail.com

<sup>1</sup>Department of Children's Dentistry, Stony Brook University Health Science Center, Stony Brook NY 11794, USA

Full list of author information is available at the end of the article

proinflammatory cytokines, including IL-1 $\beta$ , as mediators in disease development [20-22]. To explore whether osteoarthritis contributes to the development of neuroinflammation and possibly AD pathology, we employed somatic mosaic expression of IL-1 $\beta$  in the knees and temporomandibular joints of the Col1-IL1 $\beta$ <sup>XAT</sup> transgenic mouse model of osteoarthritis [23-25]. We report that localized induction of osteoarthritis in the young adult APP/PS1 mouse model of AD leads to glial activation as well as acceleration and exacerbation of AD plaque pathology. A link between peripheral and brain inflammation may prove critical to our understanding of neurodegenerative disorders and treatments thereof.

## Methods

### Animal studies

All experimental protocols involving animals were reviewed and approved by the University Committee on Animal Resources (IACUC). Employing a somatic mosaic analysis approach, we induced osteoarthritis in knees and temporomandibular joints (TMJs) of the Col1-IL1 $\beta$ <sup>XAT</sup> mouse model [23-25]. Under anesthesia (ketamine 40 mg/kg intraperitoneally), 2 month old Col1-IL1 $\beta$ <sup>XAT</sup> transgenic mice received bilateral intra-articular injections of FIV(Cre) in both knees and temporomandibular joints (10  $\mu$ L solution containing a total of 10<sup>6</sup> infectious particles per joint) as previously described. In addition, Col1-IL1 $\beta$ <sup>XAT</sup> mice that received equal dose/volume of FIV(gfp) or saline served as controls. Two or 6 months after viral transduction, the mice were deeply anesthetized (pentobarbital 100 mg/Kg intraperitoneally) and decapitated. A total of 32 mice was employed in this study: 13 Col1-IL1 $\beta$ <sup>XAT</sup> mice injected with FIV(Cre), 13 mice injected with FIV(gfp) and 6 mice injected with saline intra-articularly. Their brains were harvested and split sagittally in two halves: one half was fixed by immersion in 10% formalin for immunohistochemical analysis and the other half was immersed into Trizol reagent (Invitrogen) for RNA extraction. In addition, blood serum was collected for assessment of human IL-1 $\beta$  and murine IL-6 levels by ELISA (R&D Systems, Minneapolis MN).

The biological significance of arthritis-induced neuroinflammation was evaluated in the APP/PS1 mouse model of Alzheimer's disease [26]. To this end, APP/PS1; Col1-IL1 $\beta$ <sup>XAT</sup> compound transgenic mice were generated on the C57/BL6 background strain by crossing Col1-IL1 $\beta$ <sup>XAT</sup> transgenic mice into the APP/PS1 (B6C3-Tg(APP<sup>swe</sup>, PSEN1<sup>dE9</sup>)85Dbo/J) mouse model obtained from The Jackson Laboratories (stock 4462; Bar Harbor, ME). Osteoarthritis was induced in the knees and TMJs of 2 month old APP/PS1; Col1-IL1 $\beta$ <sup>XAT</sup> mice by FIV(Cre) injection (10  $\mu$ L solution containing a

total of 10<sup>6</sup> infectious particles per joint) under anesthesia. The mice were sacrificed 2 and 6 months following viral transduction of the knees and TMJs, at the age of 4 and 8 months, respectively. A total of 38 mice was employed in this study, including 18 experimental (APP/PS1; Col1-IL1 $\beta$ <sup>XAT</sup>) mice with arthritis and 20 (APP/PS1) control mice: The male:female ratio was 1:1.

### Histology

Brain histology sections were cut on a freezing microtome into 18  $\mu$ m thick sections, which were collected on Superfrost<sup>®</sup> glass slides. Immunohistochemical analysis for glial fibrillary acidic protein (GFAP) and class II major histocompatibility complex (MHC-II) was performed using a rabbit anti-GFAP (human) polyclonal antibody (1:1,000 dilution; Dako USA, Carpinteria, CA), and a rat anti-MHC-II (mouse) antibody (1:500 dilution; Bachem, Torrance CA; clone ER-TR3), respectively. A $\beta$  plaques were identified by immunohistochemistry employing a mouse anti- $\beta$ -amyloid (rodent) monoclonal antibody (1:400 dilution; SIGNET, El Monte, CA; clone 6E10). For A $\beta$  staining, brain sections were treated in 90% formic acetate aqueous solution for 5 minutes prior to immunohistochemistry. Primary antibodies were coupled with appropriate secondary antibodies: goat anti-rabbit IgG biotin-conjugated and goat anti-rat IgG biotin-conjugated antibodies, respectively (Jackson ImmunoResearch, West Grove PA). Visualization was performed utilizing DAB (3,3-diaminobenzidine)-nickel as chromagen. Slides were dehydrated through multiple ethanol solutions, cleared through xylene and coverslipped using DPX permanent mounting medium (Fluka, Neu-Ulm, Switzerland). Tissue sections were examined under a BX51 Olympus light microscope and color microphotographic images were captured. The total numbers of GFAP<sup>+</sup>, MHC-II<sup>+</sup> cells were counted in 10 random microscopic fields (40 $\times$ ) and cell counts were expressed as averages ( $\pm$  standard errors of mean) for each antigen. The number of A $\beta$  plaques were counted on histology sections, divided into an anterior, middle and posterior third of the brain and expressed as averages ( $\pm$  standard errors of mean) for each animal group. Each brain was halved midsagittally and sectioned on a cryostat into 20  $\mu$ m thick coronal sections collected sequentially onto 12 Permafrost<sup>®</sup> glass slides, such that a total of 24 sections were on each glass slide and each section represented an area of the brain that was 240  $\mu$ m apart from each neighboring section. The first 8 sections on each glass slide represented the anterior portion of the brain, the next 8 sections the middle and the last 8 sections represented the posterior third of the brain in our cell counting.

The knees and temporomandibular joints were also harvested, defleshed and decalcified by immersion in an

EDTA solution for 7-14 days in 4°C under constant agitation. The joints were then processed on a RHS-1 microwave tissue processor, after which the samples were embedded in paraffin, cut on a microtome as 3 µm thick sections and collected on glass slides. Joint histopathology was evaluated in sections stained by Alcian blue-orange G histochemistry using a scale 0-5 previously described [23,24]. Articular cloning was assessed by microscopy and counted as 2 or more chondrocytes present in a single lacuna in each joint section [23]. Antibodies used in these experiments include a rabbit anti-human mature IL-1β (1:100; Abcam, Cambridge MA), and rabbit anti-β-galactosidase (bacterial) (1:1,000; Sigma; St. Louis, MO). Cre recombinase expression was assessed with an antibody raised against its V5 fusion epitope (1:500; rat anti-V5; Invitrogen).

#### RT-PCR

Quantification of mRNA levels was accomplished using an iCycler (Bio-Rad) and real time qRT-PCR with Taqman probes constructed with FAM (fluorescent marker) and Blackhole I quencher (Biosearch Technologies, Novato CA) as previously described [23]. PCR reactions were performed in a volume of 25 µl and contained iQ Supermix (Bio-Rad, Hercules CA), 0.625 U Taq, 0.8 mM dNTP, 3 mM Mg<sup>2+</sup>, 0.2-0.6 µM concentrations of each primer, 10-100 nM probe and 1 µl of cDNA sample. To correct for variations in starting RNA values, the level of ribosomal 18S RNA or GAPDH RNA was determined for all samples and used to normalize all subsequent RNA determinations. Normalized threshold cycle (Ct) values were then transformed, using the function-expression = (1 + e)<sup>-Ct</sup>, in order to determine the relative differences in transcript expression. Using this method, transcript levels for IL-1β, TNFα, GFAP and MHC-II were measured.

#### Behavioral Analyses

Grooming behavior was evaluated by adapting a method previously described [23]. In brief, mice were placed in a custom-made cage (12"x12"x12") with 4 mirrored walls. The cage lacked a roof so that the mice could be observed and recorded. Each mouse was transferred into the aforementioned observation chamber containing bedding from its original cage and was allowed a 30 min habituation period to minimize stress. Behaviors were recorded on a video-tape for a period of 60 minutes using a Sony digital recorder (Digital Handycam/Digital 8) with a Cokin macro digital lens (mode C043) added for image enlargement. The mouse was then returned to its original cage. Grooming was measured during play-back by counting the number of seconds a mouse rubbed its face and/or flinched its head during the session. The mice did not have access to food or water

during the brief testing period. Behavioral evaluation was performed by an investigator blinded to the mouse group assignment. The behavior was characterized in 3 minute increments over the 60 minutes of evaluation. These data were entered into FileMaker Pro V7 (FileMaker Inc., Santa Clara CA) and exported to Excel (Microsoft Inc.) for analysis. Motor performance was assessed weekly using a Rotarod appliance (Columbus Instruments; Columbus OH) and measured as the ability of the mice to maintain balance on a rotating cylinder (20 rpm) by measuring the latency of each animal until it fell off.

#### Statistical analysis

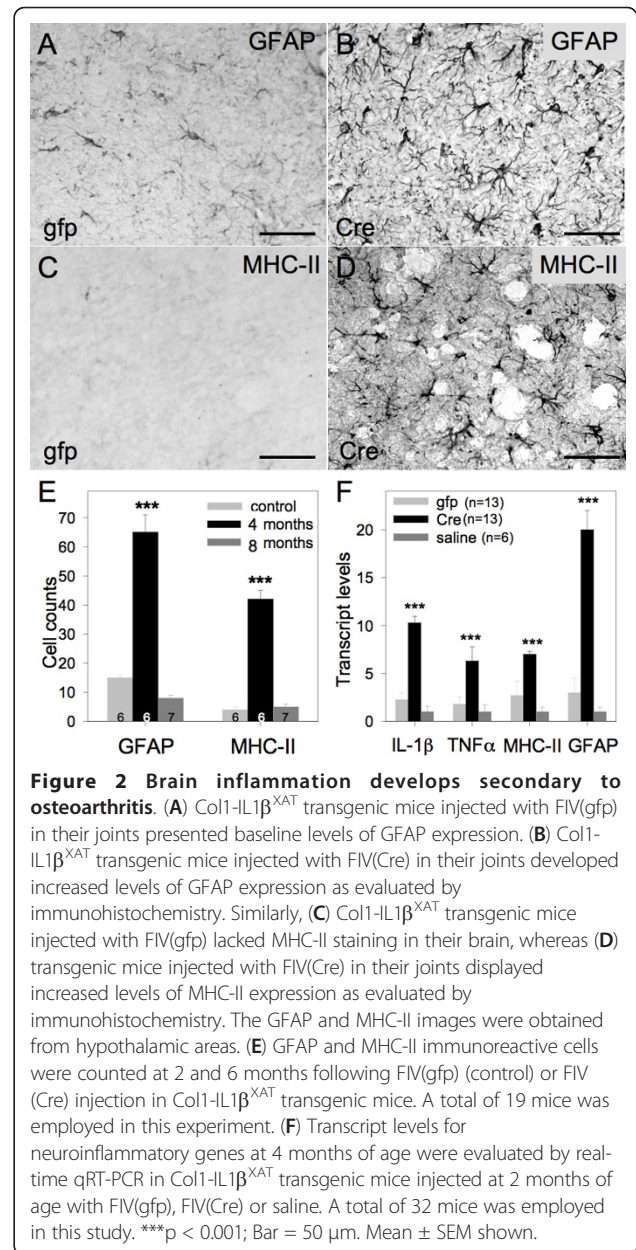
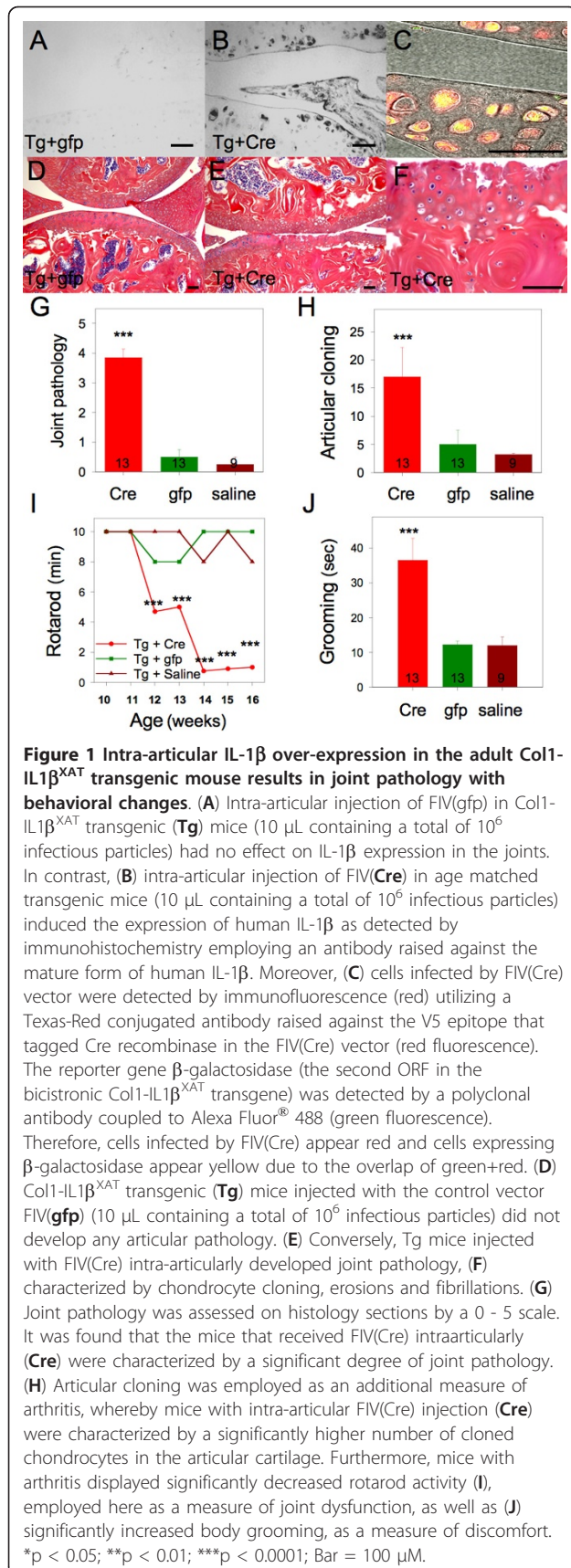
Data were compared by one way analysis of variance (ANOVA) followed by Tukey's post hoc test to determine differences between groups. *P* values less than 0.05 were considered statistically significant.

#### Results

Intra-articular injection of the viral vector FIV(Cre) in the knees and TMJ's of Col1-IL1β<sup>XAT</sup> transgenic mice induced the expression of human IL-1β following loxP directed excisional DNA recombination and transgene activation (Figure 1B-C). Eight weeks following viral transduction, we observed development of arthritis in experimental joints (knees), presenting as fibrillations and erosions of the articular cartilage (Figure 1E-F), whereas transgenic mice injected with the control vector FIV(gfp) showed no evidence of arthritis (Figure 1D). Joint pathology was assessed histologically (Figure 1G) on a scale 0-to-5 as well as on the number of chondrocyte clones in the articular cartilage (Figure 1H). Knee arthritis also induced behavioral changes including a decline in rotarod performance (Figure 1I) as well as increased grooming activity (Figure 1J). Joint pathology was also evaluated in APP/PS1 transgenic mice and was found to be indistinguishable from wild type mice. Histological evaluation of joints from APP/PS1; Col1-IL1β<sup>XAT</sup> mice with osteoarthritis revealed joint pathology similar to that of Col1-IL1β<sup>XAT</sup> mice with osteoarthritis (data not shown).

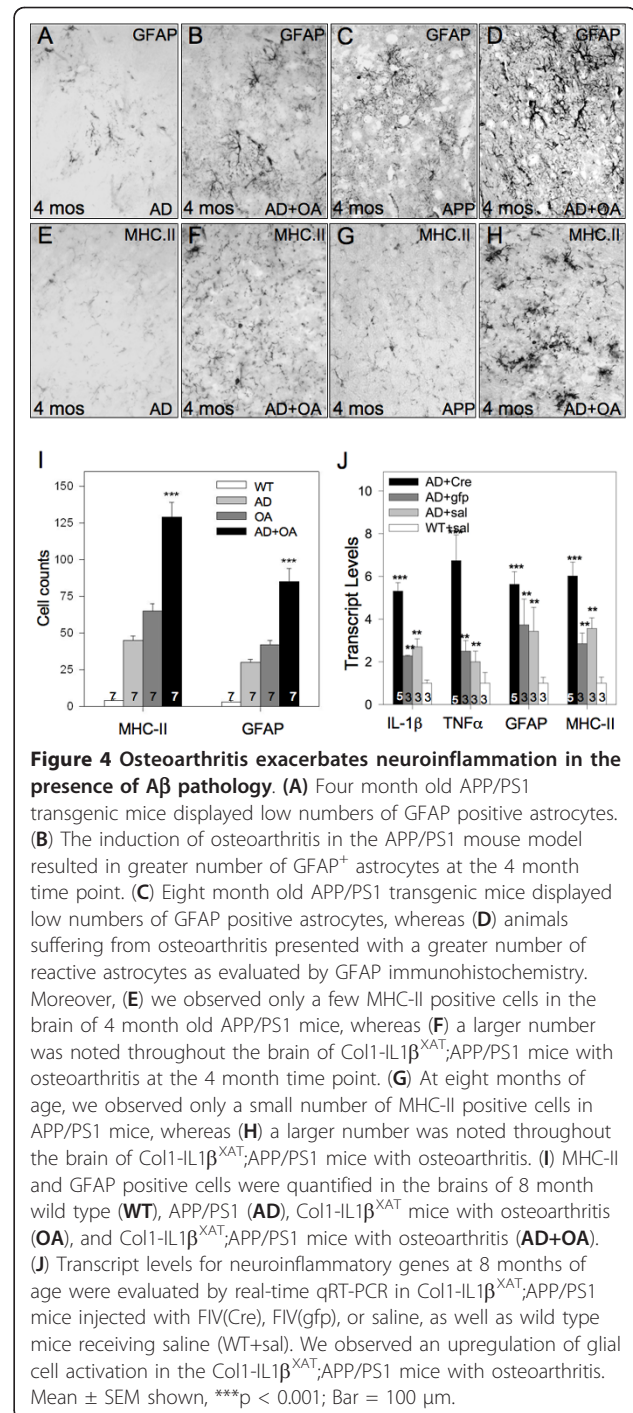
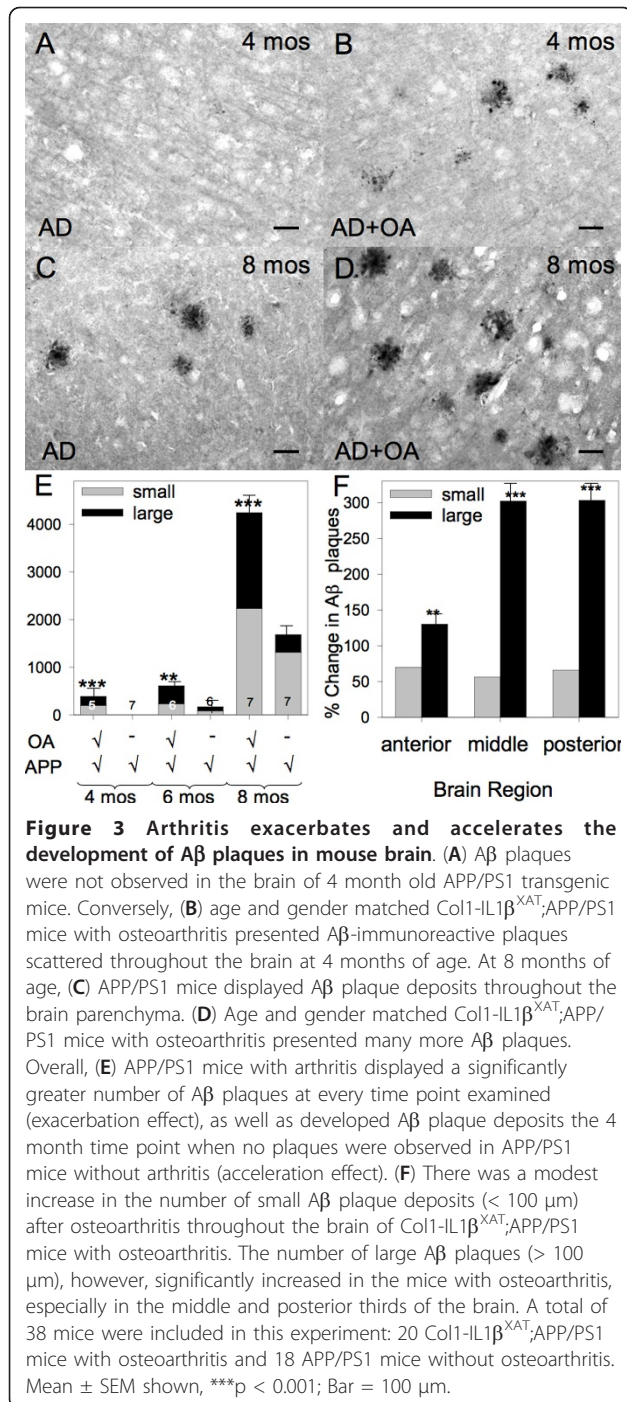
Two months following the induction of osteoarthritis, we observed astrocyte (Figure 2A-B) and microglia (Figure 2C-D) activation throughout the brains of affected mice. Although the number of reactive cells was significantly increased at 2 months, the level of glial cell activation normalized 6 months after osteoarthritis induction (Figure 2E), following the course of osteoarthritis development in this mouse model [23]. Consistent with these findings, real-time qRT-PCR analysis of inflammation-associated mRNAs in the mouse brain demonstrated a significant upregulation of murine IL-1β, TNFα, MHC-II and GFAP mRNA 2 months after





the induction of osteoarthritis (Figure 2F), which returned to baseline levels at the 6 month time point.

We found no evidence of human IL-1 $\beta$  in the serum of any of the mice in the study as evaluated by ELISA. The absence of human IL-1 $\beta$  expression in the brain of the mice with osteoarthritis was confirmed by immunohistochemistry using an antibody raised specifically against a unique epitope of this cytokine that distinguishes it from murine IL-1 $\beta$ . Subsequently, we examined whether endogenous, murine cytokines were elevated in the blood stream of these mice: Mice injected with FIV(Cre) demonstrated a 3.8 fold increase (p < 0.016, F = 7.28) relative to controls (gfp injected) in



serum levels of murine IL-6. Additional evidence for a systemic inflammatory response was revealed by immunohistochemistry in the livers of these mice, where we observed a dramatic increase in the number of MHC-II positive cells Kupfer cells and increased IL-6 expressing cells (data not shown).

To determine whether the aforementioned osteoarthritis-induced neuroinflammation influences AD

pathology, we induced osteoarthritis in APP/PS1; Col1-IL1β<sup>XAT</sup> compound transgenic mice at 2 months of age. Activation of the Col1-IL1β<sup>XAT</sup> transgene in this compound mouse model resulted in behavioral changes (reduction of locomotion) as assessed by the Rotarod method similar to those shown for Col1-IL1β<sup>XAT</sup> mice with osteoarthritis (Figure 11). Next, we identified the formation of Aβ plaques as early as the 4 months of age



(2 month time point), we observed the development of A $\beta$  plaque deposits in the brain parenchyma; conversely, there were no plaques observed in age- and gender-matched APP/PS1 mice (Figure 3A-B). At 8 months of age (6 month time point), APP/PS1; Col1-IL1 $\beta$ <sup>XAT</sup> mice suffering from osteoarthritis displayed increased numbers of A $\beta$  plaques throughout their brain compared to age- and gender- matched APP/PS1 mice, with an apparent preponderance of large diameter (> 100  $\mu$ m) plaques (Figure 3C-D). To confirm these observations, we counted the number of large (> 100  $\mu$ m) and small (< 100  $\mu$ m) A $\beta$  plaque deposits in APP/PS1 and APP/PS1; Col1-IL1 $\beta$ <sup>XAT</sup> transgenic mice at 4, 6 and 8 months of age. We found that A $\beta$  plaques appeared earlier in APP/PS1 mice with osteoarthritis, in significantly larger numbers at all time points examined (Figure 3E). When broken down by plaque size, we observed an approximately 50% increase in the number of small plaques throughout the brain parenchyma. In contrast, the increase of large plaques (> 100  $\mu$ m) was much higher, especially in the middle and posterior third of the brain after arthritis induction (Figure 3F). Our results demonstrate that the presence of osteoarthritis, even in a small number of joints, induces the accumulation of A $\beta$  plaques in the APP/PS1 model of AD at an age when such pathology is not present and enhances pathology at later times. Concomitant with the accelerated formation of A $\beta$  plaque deposition in the APP/PS1; Col1-IL1 $\beta$ <sup>XAT</sup> mice with osteoarthritis, we observed exacerbation of astrocyte (Figure 4A-D) and microglial (Figure 4E-H) activation as assessed by immunohistochemistry. The number of reactive glial cells was significantly increased in APP/PS1; Col1-IL1 $\beta$ <sup>XAT</sup> mice with osteoarthritis compared to APP/PS1 mice without osteoarthritis and wild type controls (Figure 4I). mRNA analysis for several murine cytokines and markers of glial activation revealed increased transcript levels in the APP/PS1; Col1-IL1 $\beta$ <sup>XAT</sup> mice with osteoarthritis compared to APP/PS1; Col1-IL1 $\beta$ <sup>XAT</sup> mice without osteoarthritis or wild type controls (Figure 4J).

## Discussion

Our studies demonstrate that induction of osteoarthritis in the APP/PS1 mouse model of AD at 2 months of age resulted in the development of A $\beta$  plaques and neuroinflammation as early as 4 months of age, whereas there was lack of A $\beta$  plaques in the absence of osteoarthritis. APP/PS1 mice showed a modest level of A $\beta$  pathology and neuroinflammation at 6 months of age, a time point when mice with osteoarthritis displayed a greater number of A $\beta$  plaques. A $\beta$  pathology and neuroinflammation was further exacerbated at the 8 month time point. These findings are consistent with the literature, whereby APP/PS1 transgenic mice begin developing A $\beta$

plaque pathology at 5-6 months of age [26]. Overall, our data show that the induction of osteoarthritis in young adult APP/PS1;Col1-IL1 $\beta$ <sup>XAT</sup> transgenic mice exacerbates and accelerates the development of AD pathology, suggesting that peripheral inflammation may be associated with increased risk for AD pathology.

Peripheral inflammation as a risk factor for AD was previously suggested by several clinical [1-6] and animal studies. For example, Cunningham and coworkers [9,10] examined the effects of acute systemic inflammation by means of LPS intraperitoneal injections in a mouse model of prion disease. They reported induction of acute behavioral and cognitive changes, along with acceleration of neurodegeneration and exacerbation of brain inflammation. Similar results were also reported by another study [27]. Intraperitoneal LPS injection in the PS1 transgenic mouse model of AD resulted in increased transcript levels for a number of inflammatory cytokines, such as IL-1 $\beta$  and TNF $\alpha$ , as well as induction in A $\beta$ 40 & A $\beta$ 42 levels in the brain [12]. In another study, LPS injection in the triple transgenic mouse model of AD (3xTg-AD) exacerbated Tau pathology by a cdk5 - mediated pathway, but did not have a measurable effect on A $\beta$  [28]. Repeated LPS injections in wild type mice resulted in accumulation of A $\beta$ 1-42 in the hippocampus and cerebral cortex of mice through increased  $\beta$ - and  $\gamma$ -secretase activities along with increased expression of amyloid precursor protein [11].

Brain inflammation is considered an integral part of AD, sparked initially by observations of colocalization of MHC class II<sup>+</sup> microglia with neuritic plaques [29,30]. In the ensuing years, neuroinflammation was implicated as a primary contributor to AD pathogenesis based on epidemiologic studies linking chronic nonsteroidal anti-inflammatory drug (NSAID) use to reduced AD incidence [31] and the encouraging results of a few preliminary clinical studies (e.g. [30]). Subsequent clinical trials employing glucocorticoids [32] and NSAIDs [33,34] on patients with AD and mild cognitive impairment [35], as well as cognitively normal individuals at risk for AD [36], offered little support for the inflammatory hypothesis. Anti-inflammatory treatment of APP/PS1 double transgenic (2xTg-AD) mice had no effect on A $\beta$  metabolism in the brain [37]. However, a subset of NSAIDs have been shown to possess  $\gamma$ -secretase modulating activity that can reduce A $\beta$  production *in vitro* and *in vivo* independently of cyclooxygenase activity [38]. Previous studies in our laboratory, examining the role of brain inflammation in AD pathology, revealed that chronic, low level expression of IL-1 $\beta$  in the brain of GFAP-IL1 $\beta$ <sup>XAT</sup>; APP/PS1 compound transgenic mice resulted in amelioration of AD pathology via removal of A $\beta$  plaques following the recruitment of peripheral immune cells in the brain [19,39].

But how is joint osteoarthritis linked to AD pathology? Numerous clinical and animal reports in the past showed an increase in circulating pro-inflammatory cytokines in the serum of patients and small animals suffering from arthritis [40]. To this end, our data showed a significant increase in IL-6 serum levels after the induction of osteoarthritis. A likely scenario is that circulating cytokines contribute to brain inflammation and may exacerbate it in the context of AD. There are several mechanisms by which cytokines might influence the CNS [41], including: (A) direct diffusion through the incomplete blood-brain barrier in the circumventricular organs; (B) activation of brain endothelial cells, which in turn signal to perivascular cells and cells of the brain parenchyma; (C) active transport of cytokines across the blood-brain barrier via transporter systems that can be shared between cytokines (IL-1 $\alpha$ , IL-1 $\beta$ , IL1RA), or transporters for specific cytokines (TNF $\alpha$ ); and (D) possible communication involving the vagus nerve or other neuronal afferents, which connect the peritoneal cavity with neuronal populations of the brain stem [41,42]. Although the exact mechanism by which circulating cytokines alter the CNS in our model is not known, it is anticipated that such signaling would result in exacerbation of the attendant glial cell activation and neuroinflammation in AD mice with osteoarthritis, which is exactly what our data demonstrate. It is interesting to note that neuroinflammation in our model of osteoarthritis was transient and resolved by the 6-month time point (8 months of age) in mice not carrying the APP/PS1 transgenes. In mice harboring such transgenes, pathology appears to continue to increase between 6 and 8 months, suggesting that a transient episode of peripheral inflammation is sufficient to trigger progressive AD pathology and neuroinflammation, perhaps through stimulation of a feed-forward process.

The specific mechanism linking peripherally induced neuroinflammation to AD pathology is not known, but might involve increased A $\beta$  production [11,14,43], decreased A $\beta$  catabolism, or changes in A $\beta$  transport [44]. Alternatively, neuroinflammatory signals might limit the capacity of microglia and other cells to clear A $\beta$  plaques [45]. Future studies focused on A $\beta$  metabolism as well as investigation of inflammatory mediators and microglial phenotypes will be required in this model. A potentially fruitful study would be to compare the neuroinflammatory response in this model of peripheral inflammation where plaques accumulate to a model of CNS induced neuroinflammation where plaques are reduced (e.g. [39]).

Interestingly, physical exercise may reduce the degree of AD pathology in mice, raising the possibility that the changes we observed might be due to reduced

locomotion in arthritic mice. Recent work on the subject reveals that short-term (1 month) locomotion exercise applied to AD mice (APP/PS1 and APP mutants) reduced total brain A $\beta$ 1-42 and A $\beta$ 1-40 levels, but did not influence plaque number [46,47]. However, long-term exercise (5 months) reportedly reduced A $\beta$  plaque formation in the APP transgenic mouse [46]. Development of osteoarthritis in our model began to effect locomotion 2 weeks following transgene activation in the joints, imposing a potential impact on overall health for 6 weeks (short term effect). Notwithstanding differences in physical activity between normally caged mice and those undergoing experimentally induced exercise, these data together with the aforementioned studies suggest that loss of physical activity due to osteoarthritis likely has little or no effect on A $\beta$  plaque loading evaluated in our studies.

In conclusion, the aforementioned body of literature as well as our own findings point out that peripheral inflammation exacerbates AD pathology in mice. These results have significant implications in consideration of risk factors for AD and possibly other neurodegenerative conditions. In particular, osteoarthritis is a very prevalent disease, with nearly 90% of individuals over the age of 65 having some degree of joint pathology. Future studies will focus on the mechanisms by which peripheral inflammation and blood borne cytokines contribute to increased AD pathology in our model. Strategies to reduce peripheral inflammation or that are aimed at the link between peripheral inflammation and the CNS may well prove beneficial in reducing the burden of neurodegenerative disease.

#### Acknowledgements

This work was supported in part by NIH grants AG28325, AR055035 and DE017765 to SK and NS048522 and AG030149 to MKO as well as a grant from the Caroline Schmitt Foundation.

#### Author details

<sup>1</sup>Department of Children's Dentistry, Stony Brook University Health Science Center, Stony Brook NY 11794, USA. <sup>2</sup>Department of Emergency Medicine, Stony Brook University Health Science Center, Stony Brook NY 11794, USA. <sup>3</sup>Department of Oral Biology & Pathology, Stony Brook University Health Science Center, Stony Brook NY 11794, USA. <sup>4</sup>Eastman Institute for Oral Health, University of Rochester Medical Center, Rochester NY 14620, USA. <sup>5</sup>Neurobiology & Anatomy, School of Medicine & Dentistry, University of Rochester, Rochester NY 14642, USA.

#### Authors' contributions

SK contributed to the research design, research work and manuscript composition; RHT contributed to the research work and manuscript composition; JHM, MEO, RJ, MY, JAO and SMB contributed to the research work, and MKO contributed to the research design and manuscript composition. All authors read and approved the final manuscript.

#### Competing interests

The authors declare that they have no competing interests.

Received: 13 June 2011 Accepted: 7 September 2011

Published: 7 September 2011

## References

- Engelhart MJ, et al: Inflammatory proteins in plasma and the risk of dementia: the Rotterdam study. *Arch Neurol* 2004, **61**:668-672.
- Holmes C, et al: Systemic infection, interleukin-1 $\beta$  and cognitive decline in Alzheimer's disease. *J Neurol Neurosurg Psychiatry* 2003, **74**:788-789.
- Tan ZS, et al: Inflammatory markers and the risk of Alzheimer's disease: the Framingham study. *Neurology* 2007, **70**:1222-1223.
- Bermejo P, et al: Differences of peripheral inflammatory markers between mild cognitive impairment and Alzheimer's disease. *Immunol Lett* 2007, **117**:198-202.
- Bonotis K, et al: Systemic immune aberrations in Alzheimer's disease patients. *J Immunol* 2008, **193**:183-187.
- Holmes C, et al: Systemic inflammation and disease progression in Alzheimer disease. *Neurology* 2009, **73**:768-774.
- Pociot F, Molvig J, Wogensen L, Worsaae H, Nerup J: A TaqI polymorphism in the human interleukin-1 beta (IL-1 beta) gene correlates with IL-1 beta secretion *in vitro*. *Eur J Clin Invest* 1992, **22**:396-402.
- Griffin WS, Nicoll JA, Grimaldi LM, Sheng JG, Mrak RE: The pervasiveness of interleukin-1 in alzheimer pathogenesis: a role for specific polymorphisms in disease risk. *Exp Gerontol* 2000, **35**:481-487.
- Cunningham C, et al: Comparison of inflammatory and acute-phase responses in the brain and peripheral organs of the ME7 model of prior disease. *J Virol* 2005, **79**:5174-5184.
- Cunningham C, et al: Systemic inflammation induces acute behavioral and cognitive changes and accelerates neurodegenerative disease. *Biol Psych* 2009, **65**:304-312.
- Lee JW, et al: Neuro-inflammation induced by lipopolysaccharide causes cognitive impairment through enhancement of beta-amyloid generation. *J Neuroinflamm* 2008, **5**:37-37.
- Sly LM, et al: Endogenous brain cytokine mRNA and inflammatory responses to lipopolysaccharide are elevated in the Tg2576 transgenic mouse model of Alzheimer's disease. *Brain Res Bull* 2001, **56**:581-588.
- Qiao X, Cummins DJ, Paul SM: Neuroinflammation-induced acceleration of amyloid deposition in the APPV717F transgenic mouse. *Eur J Neurosci* 2001, **14**:474-482.
- Sheng JG, Price DL, Koliatsos VE: Lipopolysaccharide-induced-neuroinflammation increases intracellular accumulation of amyloid precursor protein and amyloid beta peptide in APPsw transgenic mice. *Neurobiol Dis* 2003, **14**:133-145.
- DiCarlo G, Wilcock D, Henderson D, Gordon M, Morgan : Intrahippocampal LPS injections reduce A $\beta$  load in APP+PS1 transgenic mice. *Neurobiol Aging* 2001, **22**:1007-1012.
- Quinn J, et al: Inflammation and cerebral amyloidosis are disconnected in an animal model of Alzheimer disease. *J Neuroimmunol* 2003, **137**:32-41.
- Herber DL, et al: Time-dependent reduction in A $\beta$  levels after intracranial LPS administration in APP transgenic mice. *Exp Neurol* 2004, **190**:245-253.
- Chakrabarty P, et al: Massive gliosis induced by interleukin-6 suppresses A $\beta$  deposition *in vivo*: evidence against inflammation as a driving force for amyloid deposition. *FASEB* 2004, **24**:548-559.
- Shaftel SS, et al: Sustained hippocampal IL-1 $\beta$  overexpression mediates chronic neuroinflammation and ameliorates Alzheimer plaque pathology. *J Clin Invest* 2007, **117**:1595-1604.
- Staita ND, et al: Induction of an acute erosive monarticular arthritis in mice by interleukin-1 and methylated bovine serum albumin. *Arthr Rheum* 1990, **33**:253-260.
- Ghivizzani SC, et al: Constitutive intra-articular expression of human IL-1 $\beta$  following gene transfer to rabbit synovium produces all major pathologies of human rheumatoid arthritis. *J Immunol* 1997, **159**:3604-12.
- Lawlor KE, et al: Molecular and cellular mediators of interleukin-1-dependent acute inflammatory arthritis. *Arthr Rheum* 2001, **44**:442-50.
- Lai Y-C, et al: Intra-articular induction of chronic IL-1 $\beta$  expression in the adult mouse results in an osteoarthritis-like phenotype accompanied by pain. *Arthr Rheum* 2006, **54**:1184-97.
- Kyrkanides S, et al: Intra-articular  $\mu$ -opioid receptor induction ameliorates arthritic pain and joint pathology. *Arthr Rheum* 2007, **56**:2038-48.
- Fiorentino PM, et al: Spinal IL-1 $\beta$  in arthritis and joint pain. *Arthr Rheum* 2008, **58**:3100-3109.
- Jankowsky JL, et al: Mutant presenilins specifically elevate the levels of the 42 residue beta-amyloid peptide *in vivo*: evidence for augmentation of a 42-specific gamma secretase. *Hum Mol Genet* 2004, **13**:159-170.
- Combrinck MI, Perry VH, Cunningham C: Peripheral infection evokes exaggerated sickness behaviour in pre-clinical murine prion disease. *Neurosci* 2002, **112**:7-11.
- Kitazawa M, Oddo S, Yamasaki TR, Green KN, LaFerla FM: Lipopolysaccharide-induced inflammation exacerbates tau pathology by a cyclin-dependent kinase 5-mediated pathway in a transgenic model of Alzheimer's disease. *J Neurosci* 2005, **25**:8843-53.
- McGeer PL, Akiyama H, Itagaki S, McGeer EG: Immune system response in Alzheimer's disease. *Can J Neurol Sci* 1989, **16**:516-527.
- Rogers J, et al: Clinical trial of indomethacin in Alzheimer's disease. *Neurology* 1993, **43**:1609-1611.
- McGeer PL, Schulzer M, McGeer EG: Arthritis and anti-inflammatory agents as possible protective factors for Alzheimer's disease: a review of 17 epidemiologic studies. *Neurology* 1996, **47**:425-432.
- Aisen PS, et al: A randomized controlled trial of prednisone in Alzheimer's disease. Alzheimer's Disease Cooperative study. *Neurology* 2000, **54**:588-593.
- Aisen , et al: Effects of rofecoxib or naproxen versus placebo on Alzheimer Disease progression: a randomized controlled trial. *JAMA* 2003, **289**:2819-2826.
- Group AR, et al: Naproxen and celecoxib do not prevent AD in early results from a randomized controlled trial. *Neurology* 2007, **68**:1800-1808.
- Thal LJ, et al: A randomized, double blind study of rofecoxib in patients with mild cognitive impairment. *Neuropsychopharmacol* 2005, **30**:1204-1215.
- Lyketsos CG, et al: Naproxen and celecoxib do not prevent AD in early results from a randomized controlled trial. ADAPT Research Group. *Neurology* 2007, **68**:1800-1808.
- Choi J-K, et al: Anti-inflammatory treatment in AD mice protects against neuronal pathology. *Exp Neurol* 2010, **223**:377-384.
- Weggen S, et al: A subset of NSAIDs lowers amyloidogenic A $\beta$ 42 independently of cyclooxygenase activity. *Nature* 2001, **414**:212-16.
- Shaftel SS, et al: Chronic interleukin-1beta expression in mouse brain leads to leukocyte infiltration and neutrophil-independent blood brain barrier permeability without overt neurodegeneration. *J Neurosci* 2007, **27**:9301-9.
- Houssein MR, Fathi NA, El-Din AME, Hassan HI, Abdullah F, Al-Hakeem E, Backer EA: Alterations of the CD4<sup>+</sup>, CD8<sup>+</sup> T Cell Subsets, Interleukins-1 $\beta$ , IL-10, IL-17, Tumor Necrosis Factor- $\alpha$  and Soluble Intercellular Adhesion Molecule-1 in Rheumatoid Arthritis and Osteoarthritis: Preliminary Observations. *Pathol Oncol Res* 2008, **14**:321-8.
- Banks WA, Farr SA, Morley JE: Entry of blood-borne cytokines into the central nervous system: Effects on cognitive processes. *Neuroimmunomodul* 2002, **10**:319-27.
- Konsman JP, Parnet P, Dantzer R: Cytokine-induced sickness behavior: mechanisms and implications. *Trends Neurosci* 2002, **25**:154-159.
- Heneka MT, Sastre M, Dumitrescu-Ozimek L, Dewachter I, Walter J, Klockgether T, Van Leuven F: Focal glial activation coincides with increased BACE1 activation and precedes amyloid plaque deposition in APP[V717I] transgenic mice. *J Neuroinflamm* 2005, **2**:22.
- Jaeger LB, Dohgu S, Sultana R, Lynch JL, Owen JB, Erickson MA, Shah GN, Price TO, Fleegal-Demotta MA, Butterfield DA, Banks WA: Lipopolysaccharide alters the blood-brain barrier transport of amyloid beta protein: a mechanism for inflammation in the progression of Alzheimer's disease. *Brain Behav Immun* 2009, **23**:507-17.
- Hickman SE, Allison EK, El Khoury J: Microglial dysfunction and defective beta-amyloid clearance pathways in aging Alzheimer's disease mice. *J Neurosci* 2008, **28**:8354-60.
- Adlard ePA, Perreau VM, Pop V, Cotman CW: Voluntary exercise decreases amyloid load in a transgenic model of Alzheimer's disease. *J Neurosci* 2005, **25**:4217-21.
- Ke H-C, Huang H-J, Liang K-C, Hsieh HM: Selective improvement of cognitive function in adult and aged APP/PS1 transgenic mice by continuous non-shock treadmill exercise. *Brain Res* 2011, **1403**:1-11.

doi:10.1186/1742-2094-8-112

Cite this article as: Kyrkanides et al.: Osteoarthritis accelerates and exacerbates Alzheimer's disease pathology in mice. *Journal of Neuroinflammation* 2011 **8**:112.